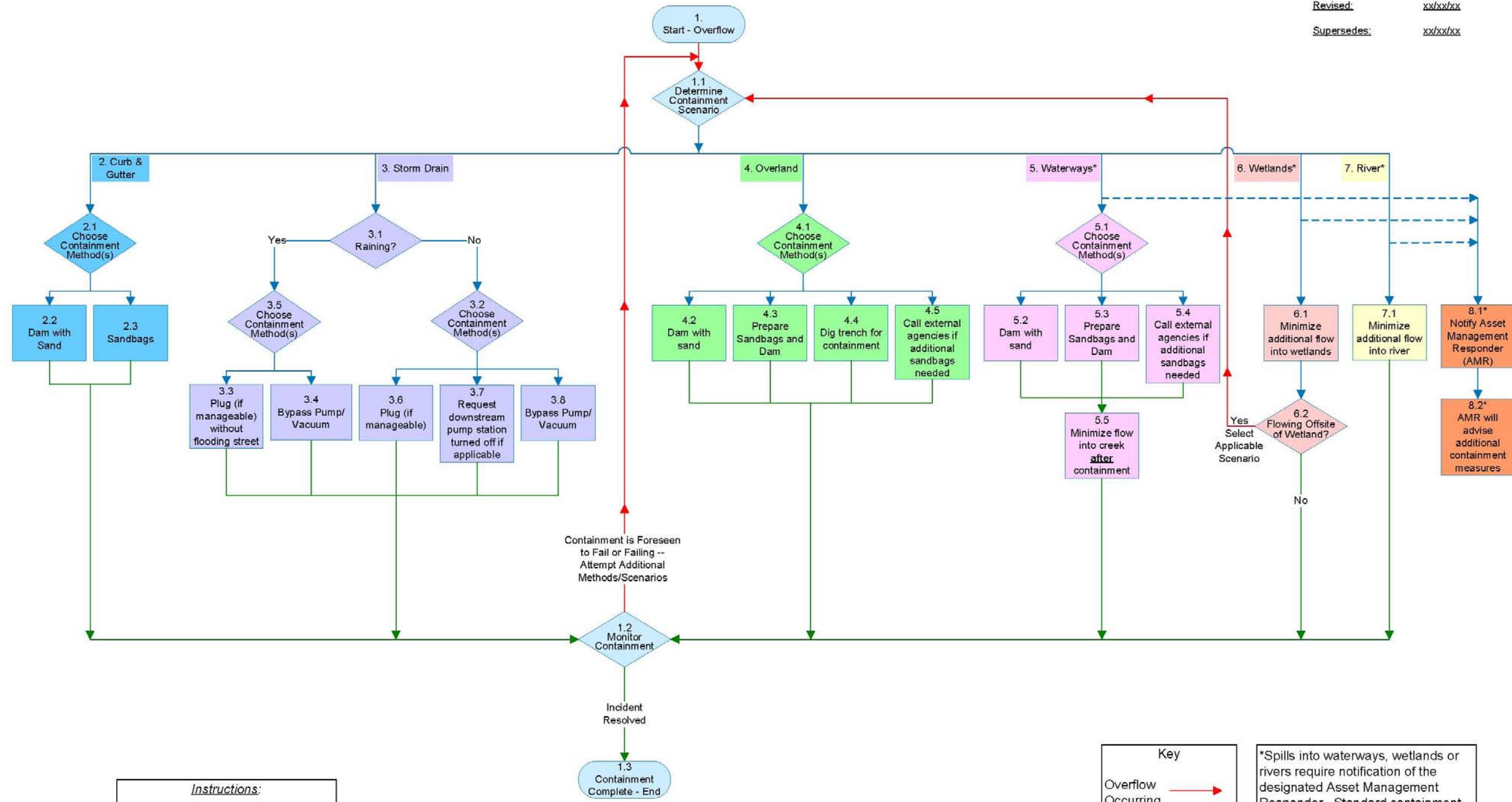


**Sacramento Area Sewer District
Sanitary Sewer Overflow (SSO) Response Procedures**

Revised 3/29/08 Supersedes 12/12/07

8.1 Overflow Containment Scenarios Procedural Flowchart

Created: 14Jun07
Revised: xx/xx/xx
Supersedes: xx/xx/xx



Instructions:
Determine scenario, then choose one or more containment methods appropriate to the scenario, favoring speed and likelihood of success.

Key

- Overflow Occurring →
- Overflow Being Worked →
- Overflow Contained →

*Spills into waterways, wetlands or rivers require notification of the designated Asset Management Responder. Standard containment efforts are to be initiated in these cases, and the AMR will advise/coordinate on additional containment measures.

8.2 Overflow Containment Scenarios Procedural Detail

1. Overflow

General Instructions: Determine scenario, then choose one or more containment methods appropriate to the scenario, favoring speed and likelihood of success.

Containment Scenario

Determine containment scenario applicable to this event:

Curb & Gutter.....	<i>Go to Section 2 on page 2</i>
Storm Drain.....	<i>Go to Section 3 on page 3</i>
Overland	<i>Go to Section 4 on page 4</i>
Waterways.....	<i>Go to Section 5 on page 5</i>
Wetlands.....	<i>Go to Section 6 on page 6</i>
River.....	<i>Go to Section 7 on page 6</i>

Monitor Containment

After containment is achieved, observe the contained overflow for the duration of the event. Determine whether the established containment will hold the current overflow material and any additional likely overflow material.

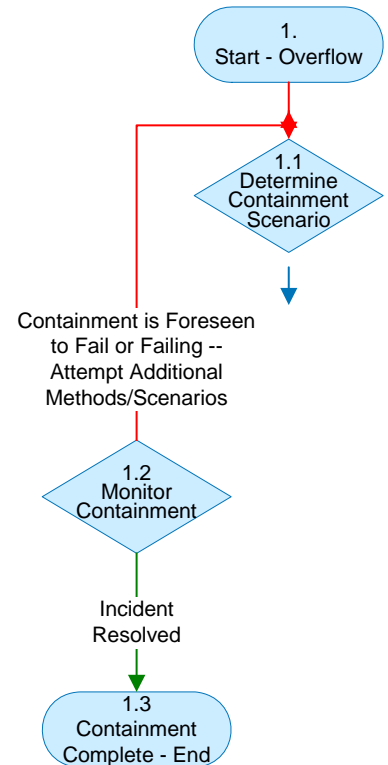
If Containment is Foreseen to Fail or Failing – Attempt additional containment measures for the applicable scenario. If the nature of the overflow scenario changes, use applicable containment methods for the new scenario (example: a contained overland flow is now spilling into a creek), go to Section 1.1 if needed.

If Incident Resolved – Containment complete.

Containment Complete

Dispose of overflow and containment materials as appropriate and follow end-of-event procedures as appropriate.

(End of Section 1, End of Procedure.)



County Sanitation District 1
Sanitary Sewer Overflow (SSO) Response Procedures

Revised 3/29/08

Supersedes 12/12/07

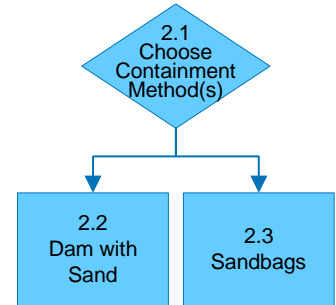
2. Curb & Gutter

2. Curb & Gutter

Attempt to contain the overflow by the following methods.

Choose Containment Method(s)

Choose one or more containment methods appropriate for this scenario and for the current situation.



Dam with Sand

Attempt to contain the overflow by creating a sand dam.

Sandbags

Attempt to contain the overflow by preparing and using sandbags.

When containment is achieved, go to Section 1.2 – Monitor Containment.

(End of Section 2, Curb & Gutter.)

County Sanitation District 1 Sanitary Sewer Overflow (SSO) Response Procedures

Revised 3/29/08

Supersedes 12/12/07

3. Storm Drain

Attempt to contain the overflow by the following methods.

3. Storm Drain

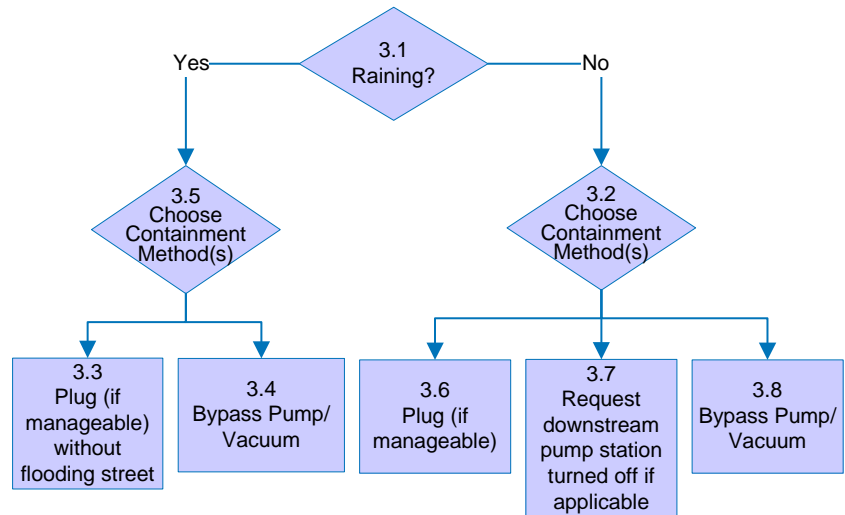
Raining?

If it is raining, go to Section 3.2.

If it is not raining, go to Section 3.5.

Choose Containment Method(s)

Choose one or more containment methods appropriate for this scenario and for the current situation.



Plug (if manageable) without flooding street

If it is possible to plug the storm drain at a site downstream of the overflow – without causing street flooding – then do so.

Bypass Pump/Vacuum

Bypass Pump/Vacuum the overflow.

Choose Containment Method(s)

Choose one or more containment methods appropriate for this scenario and for the current situation.

Plug (if manageable)

If it is possible to plug the storm drain at a site downstream of the overflow, then do so.

Request downstream pump station turned off if applicable

If necessary, request that any downstream pump station be turned off.

Bypass Pump/Vacuum

Bypass Pump/Vacuum the overflow.

When containment is achieved, go to Section 1.2 – Monitor Containment.

(End of Section 3, Storm Drain.)

County Sanitation District 1 Sanitary Sewer Overflow (SSO) Response Procedures

Revised 3/29/08

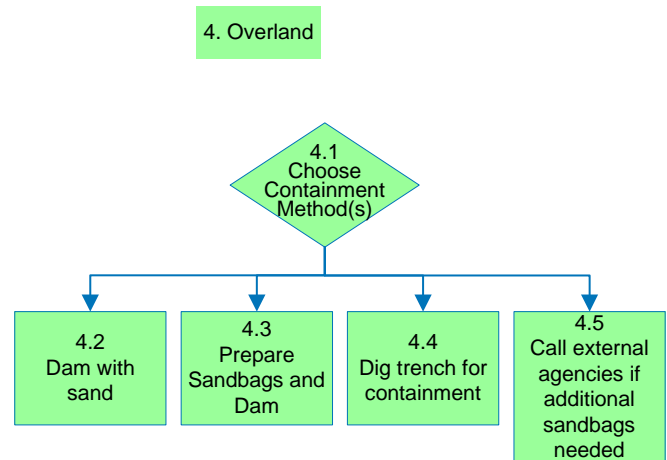
Supersedes 12/12/07

4. Overland

Attempt to contain the overflow by the following methods.

Choose Containment Method(s)

Choose one or more containment methods appropriate for this scenario and for the current situation.



Dam with sand

Attempt to contain the overflow by creating a sand dam.

Prepare sandbags and dam

Attempt to contain the overflow by preparing and using sandbags.

Dig trench for containment

Dig a trench to contain the overflow.

Call external agencies if additional sandbags needed

If additional sandbags are needed contact the following agencies at the phone numbers listed:

County of Sacramento	Dept. of Water Resources	916.875.7246
City of Citrus Heights	Public Works	916.727.4770
City of Elk Grove	Elk Grove CSD	916.687.3005
City of Sacramento	Street Services	916.808.1888
City of Galt	Public Works	209.366.7260

Also see www.floodready.org

When containment is achieved, go to Section 1.2 – Monitor Containment.

(End of Section 4, Overland.)

County Sanitation District 1 Sanitary Sewer Overflow (SSO) Response Procedures

Revised 3/29/08

Supercedes 12/12/07

5. Waterways

Contact Asset Management Responder -- See Section 8. Attempt to contain the overflow by the following methods.

Choose Containment Method(s)

Choose one or more containment methods appropriate for this scenario and for the current situation.

Dam with sand

Attempt to contain the overflow by creating a sand dam.

Prepare sandbags and dam

Attempt to contain the overflow by preparing and using sandbags.

Call external agencies if additional sandbags needed

If additional sandbags are needed contact the following agencies at the phone numbers listed:

County of Sacramento	Dept. of Water Resources	916.875.7246
City of Citrus Heights	Public Works	916.727.4770
City of Elk Grove	Elk Grove CSD	916.687.3005
City of Sacramento	Street Services	916.808.1888
City of Galt	Public Works	209.366.7260

Also see www.floodready.org

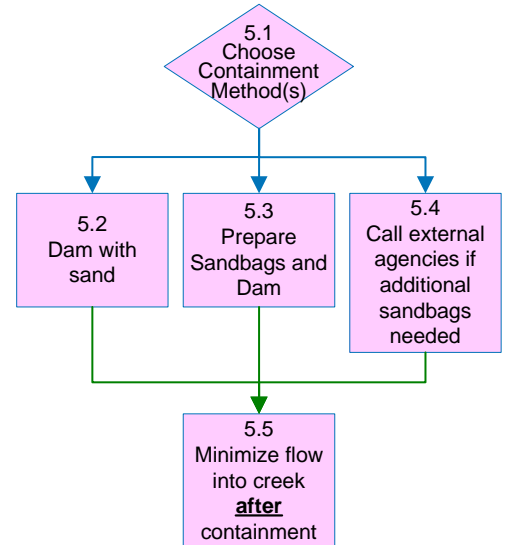
Minimize flow into creek after containment

Attempt to minimize the flow of material into waterway.

When containment is achieved, go to Section 1.2 – Monitor Containment.

(End of Section 5, Waterways.)

5. Waterways*



County Sanitation District 1 Sanitary Sewer Overflow (SSO) Response Procedures

Revised 3/29/08

Supersedes 12/12/07

6. Wetlands

Contact Asset Management Responder -- See Section 8.
Attempt to contain the overflow by the following methods.

Minimize additional flow into wetlands

Attempt to minimize the flow of material into the wetlands.

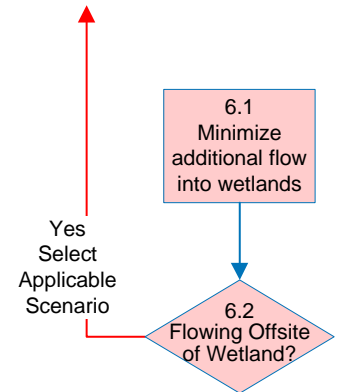
Flowing Offsite of Wetland?

If the overflow is flowing off site of the wetlands, contain using appropriate scenario containment procedure. *Go to Section 1.1 – Determine Containment Scenario.*

When containment is achieved, go to Section 1.2 – Monitor Containment.

(End of Section 6, Wetlands.)

6. Wetlands*



7. River

Contact Asset Management Responder -- See Section 8.
Attempt to contain the overflow by the following methods.

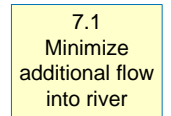
Minimize additional flow into river

Attempt to minimize the flow of material into river.

When containment is achieved, go to Section 1.2 – Monitor Containment

(End of Section 7, River.)

7. River*



8. Reportable

Category 1 SSO – Notify Asset Management Responder and proceed with containment efforts appropriate for the scenario.

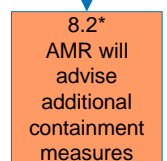
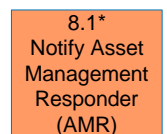
Notify Asset Management Responder

Refer to SSO Response Manual Tabs 3 and 4.

Asset Management Responder will advise additional containment measures

Refer to appropriate SSO Response Manual sections.

(End of Section 8, Reportable.)



**County Sanitation District 1
Sanitary Sewer Overflow (SSO) Response Procedures**

Revised 3/29/08

Supercedes 12/12/07

8.3 SSO Containment Scenarios & Procedures Field Cheat Sheet

Containment Scenario	Containment Options (select one or more options appropriate for the scenario, favoring speed and likelihood of success)																					
Curb & Gutter	<ul style="list-style-type: none"> • Dam with sand • Prepare Sandbags and Dam 																					
Storm Drain System (No Rain)	<ul style="list-style-type: none"> • Plug (if manageable) • Request downstream pump station is turned off, if applicable • Bypass Pump/Vacuum 																					
Storm Drain System (Raining)	<ul style="list-style-type: none"> • Plug (if manageable) without flooding streets • Bypass Pump/Vacuum 																					
Overland	<ul style="list-style-type: none"> • Dam with sand • Prepare Sandbags and Dam • Dig a trench for containment • If additional sandbags are needed, follow appropriate scenario containment procedure • If self-contained, ensure overflow remains contained 																					
Waterways	<ul style="list-style-type: none"> • Notify Asset Management Responder • Dam with sand • Prepare Sandbags and Dam • If additional sandbags are needed, follow appropriate scenario containment procedure 																					
Wetlands	<ul style="list-style-type: none"> • Notify Asset Management Responder • If flow off site from wetlands, contain using appropriate containment scenario • Minimize flow into wetlands 																					
River	<ul style="list-style-type: none"> • Notify Asset Management Responder • Minimize additional flow into river 																					
Additional Sandbag Sources	<table border="1" style="width: 100%; border-collapse: collapse;"> <tr> <td style="width: 33%;">County of Sacramento</td> <td style="width: 33%;">Dept. of Water Resources</td> <td style="width: 33%;">916.875.7246</td> </tr> <tr> <td>City of Citrus Heights</td> <td>Public Works</td> <td>916.727.4770</td> </tr> <tr> <td>City of Elk Grove</td> <td>Elk Grove CSD</td> <td>916.687.3005</td> </tr> <tr> <td>City of Sacramento</td> <td>Street Services</td> <td>916.808.1888</td> </tr> <tr> <td>City of Galt</td> <td>Public Works</td> <td>209.366.7260</td> </tr> <tr> <td> </td> <td> </td> <td> </td> </tr> <tr> <td colspan="3" style="text-align: center;"><i>Also see www.floodready.org</i></td> </tr> </table>	County of Sacramento	Dept. of Water Resources	916.875.7246	City of Citrus Heights	Public Works	916.727.4770	City of Elk Grove	Elk Grove CSD	916.687.3005	City of Sacramento	Street Services	916.808.1888	City of Galt	Public Works	209.366.7260				<i>Also see www.floodready.org</i>		
County of Sacramento	Dept. of Water Resources	916.875.7246																				
City of Citrus Heights	Public Works	916.727.4770																				
City of Elk Grove	Elk Grove CSD	916.687.3005																				
City of Sacramento	Street Services	916.808.1888																				
City of Galt	Public Works	209.366.7260																				
<i>Also see www.floodready.org</i>																						

Notes:

1. Determine scenario, then choose one or more containment methods appropriate to the scenario, favoring speed and likelihood of success.
2. Spills into waterways, wetlands or rivers require notification of the designated Asset Management Responder. Standard containment efforts are to be initiated in these cases, and the Asset Management Responder will advise/ coordinate on additional containment measures.