

SASD 2010 SYSTEM CAPACITY PLAN EXPANSION TRUNK SHEDS

FE FOLSOM TRUNK SHED

Area Description

The FE Folsom Trunk Shed is a part of the Easton approved sewer study area.

This trunk shed is bounded by Folsom Boulevard and Highway 50 on the north, Prairie City Road on the east, and the BR East Rancho Trunk Shed on the South.

Trunk System Facilities

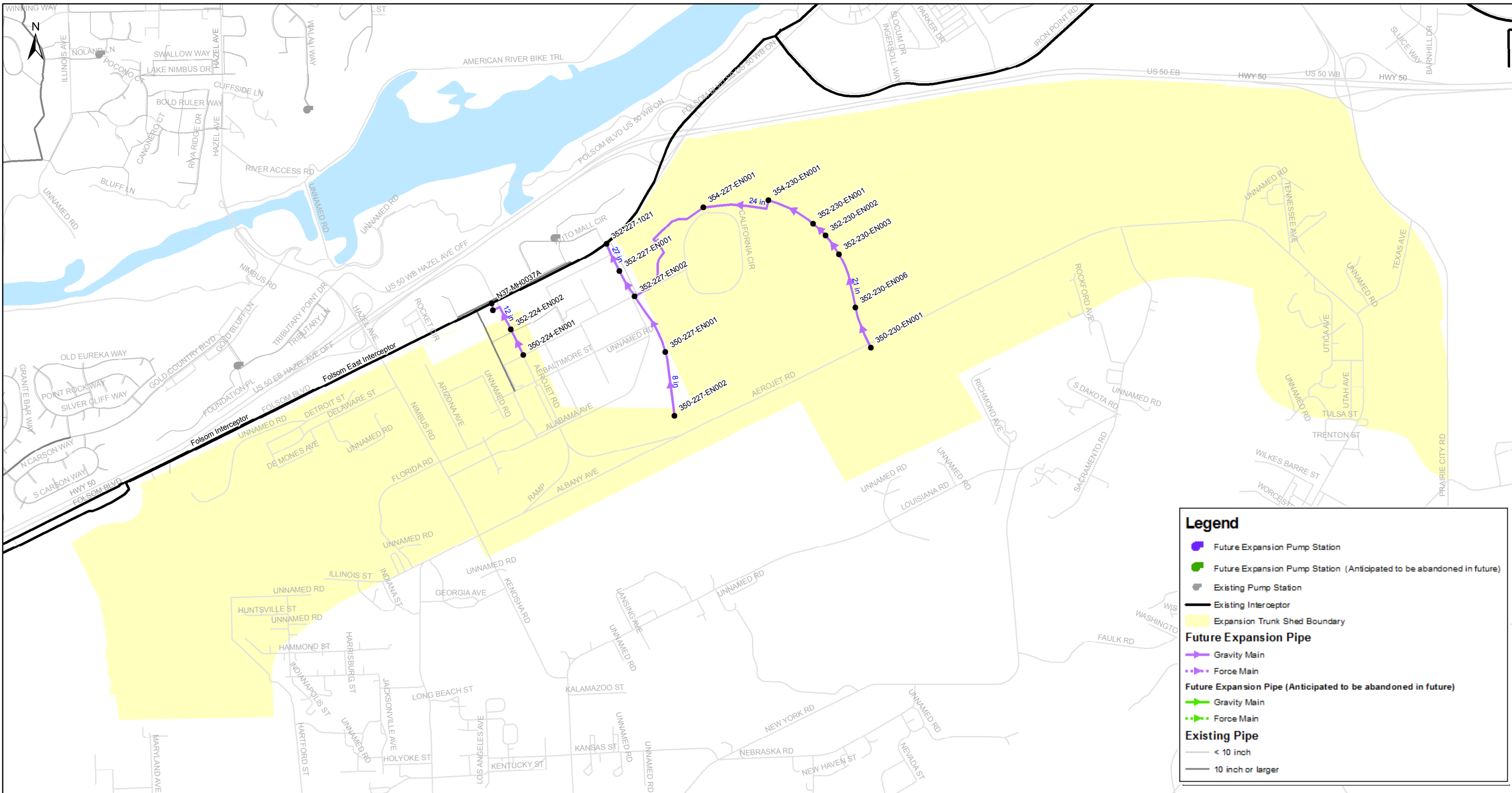
The trunk shed would be served by two trunk sewers and four local collector sewers. At the time of the development of this SCP document, the major trunk that serves eastern portion of the shed (Alabama Trunk Sewer) was proposed to drain to existing trunk manhole 352-227-1021 which is upstream of the Folsom Interceptor. However, an addendum has been recently approved for the Easton Sewer Study that changes the Alabama Trunk Sewer connection from the trunk manhole to nearby interceptor manhole N37-MH0042A. This change is not yet reflected in the attached maps and sewer data.

The other trunk, located at the western portion of the shed, will connect to manhole N37-MH0025A. The local collectors connect at interceptor manholes N37-MH0027A, N37-MH0030A, N37-MH0037A, and N37-MH0049A.

Please refer to the Easton approved sewer study and addendum for more information.

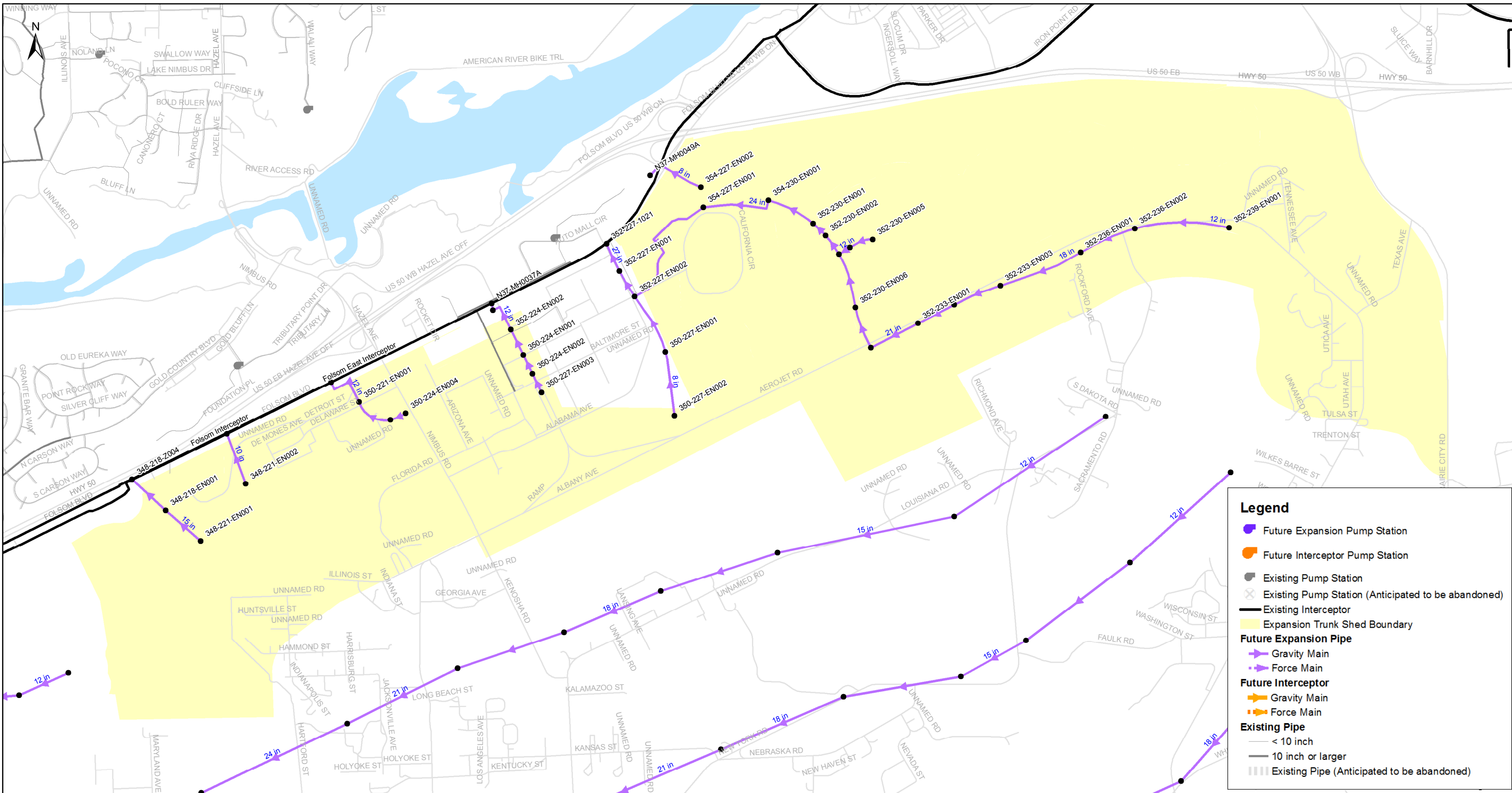
**FE Folsom
Trunk Sewer Data and Model Results
Buildout 10-Year Design Storm**

US Manhole	DS Manhole	Link Suffix	Link Type	Diameter (in)	Length (ft)	US Rim Elev. (ft)	US Invert Elev. (ft)	DS Rim Elev. (ft)	DS Invert Elev. (ft)	Slope, %	Full Capacity (mgd)	Peak Flow (mgd)	% Full Capacity	d/D
350-230-EN001	352-230-EN006	2	Gravity Main	21	754	254.5	236.3	250.4	233.2	0.420	6.66	3.21	48	0.5
352-230-EN006	352-230-EN003	2	Gravity Main	21	991	250.4	233.2	243.4	228.4	0.490	7.14	3.50	49	0.5
352-230-EN003	352-230-EN002	1	Gravity Main	24	401	243.4	228.4	235.4	213.9	3.600	27.77	4.36	16	0.3
352-230-EN002	352-230-EN001	1	Gravity Main	24	303	235.4	213.9	229.4	202.9	3.640	27.93	4.36	16	0.6
352-230-EN001	354-230-EN001	2	Gravity Main	24	891	229.4	202.9	224.1	200.9	0.220	6.90	4.36	63	0.6
354-230-EN001	354-227-EN001	2	Gravity Main	24	1254	224.1	200.9	176.0	162.8	3.030	25.49	4.36	17	0.4
354-227-EN001	352-227-EN002	1	Gravity Main	24	2369	176.0	162.8	160.4	147.7	0.640	11.72	4.36	37	0.6
352-227-EN002	352-227-EN001	1	Gravity Main	27	521	160.4	147.7	157.9	146.7	0.190	8.74	4.76	54	0.6
352-227-EN001	352-227-1021	1	Gravity Main	27	533	157.9	146.7	153.9	145.9	0.150	7.86	4.76	61	0.6
352-239-EN001	352-236-EN002	1	Gravity Main	12	1673	299.4	286.7	279.0	266.4	1.210	2.54	1.69	67	0.6
352-236-EN002	352-236-EN001	2	Gravity Main	12	1042	279.0	266.4	267.1	242.5	2.300	3.50	1.69	48	1.0
352-236-EN001	352-233-EN003	2	Gravity Main	18	1526	267.1	242.5	268.7	240.5	0.130	2.46	2.36	96	0.8
352-233-EN003	352-233-EN002	2	Gravity Main	21	879	268.7	240.2	265.2	239.1	0.130	3.66	2.59	71	0.6
352-233-EN002	352-233-EN001	2	Gravity Main	21	713	265.2	239.1	264.3	238.2	0.120	3.62	2.59	72	0.6
352-233-EN001	350-230-EN001	2	Gravity Main	21	929	264.3	238.2	254.5	236.3	0.200	4.61	2.59	56	0.5
348-221-EN001	348-218-EN001	1	Gravity Main	15	814	141.0	128.9	136.0	127.4	0.180	1.77	1.22	69	0.7
348-218-EN001	348-218-Z004	1	Gravity Main	15	801	136.0	127.4	133.9	126.0	0.180	1.77	1.38	78	0.7



2010 SASD SYSTEM CAPACITY PLAN

**FE Folsom
Year 2020 Expansion Plan
FIGURE A.12-1**

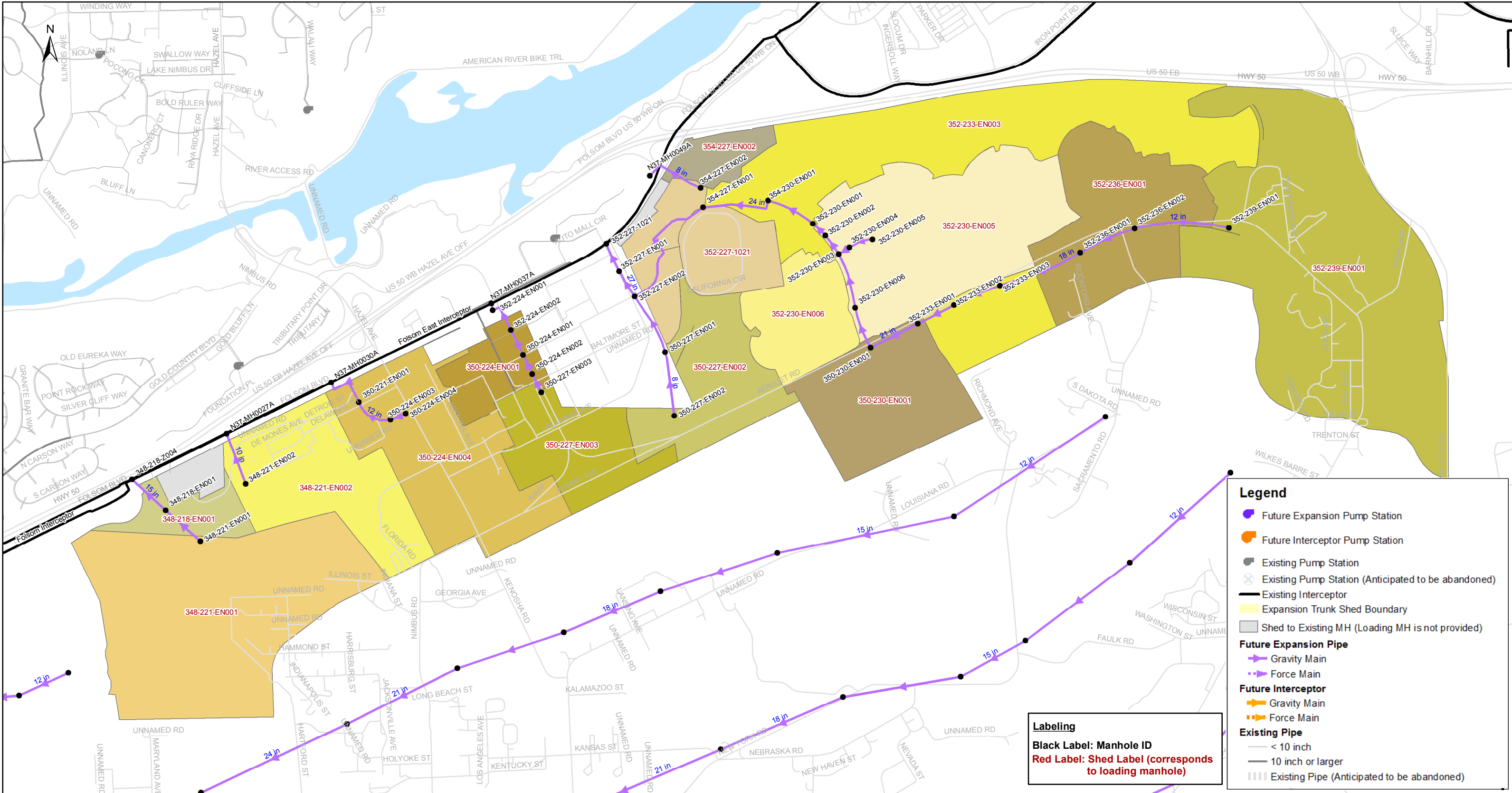


Legend

- Future Expansion Pump Station
- Future Interceptor Pump Station
- Existing Pump Station
- Existing Pump Station (Anticipated to be abandoned)
- Existing Interceptor
- Expansion Trunk Shed Boundary
- Future Expansion Pipe**
- Gravity Main
- Force Main
- Future Interceptor**
- Gravity Main
- Force Main
- Existing Pipe**
- < 10 inch
- 10 inch or larger
- Existing Pipe (Anticipated to be abandoned)



2010 SASD SYSTEM CAPACITY PLAN
FE Folsom
Buildout Expansion Plan
FIGURE A.12-2



Legend

- Future Expansion Pump Station
- Future Interceptor Pump Station
- Existing Pump Station
- Existing Pump Station (Anticipated to be abandoned)
- Existing Interceptor
- Expansion Trunk Shed Boundary
- Shed to Existing MH (Loading MH is not provided)

Future Expansion Pipe

- Gravity Main
- Force Main


Future Interceptor

- Gravity Main
- Force Main

Existing Pipe

- < 10 inch
- 10 inch or larger
- Existing Pipe (Anticipated to be abandoned)

Labeling
Black Label: Manhole ID
Red Label: Shed Label (corresponds to loading manhole)


2010 SASD SYSTEM CAPACITY PLAN
FE Folsom
Sewer Shed Map
Buildout Expansion Plan
FIGURE A.12-3