

A GUIDE
to the
Sacramento Region's
Sewer Services

Who Does What?

The Sacramento region is fortunate to have its wastewater needs handled in a manner that protects public health and the environment, and provides cost-effective service through a regional approach. But how does this sophisticated system work?



It all starts with local collection

Depending on where your home or business is located, you may receive local collection of wastewater by one of four entities: either the City of Sacramento, the City of Folsom, the City of West Sacramento or County Sanitation District 1 (CSD-1 serves Sacramento County, the cities of Elk Grove, Citrus Heights, Rancho Cordova, and portions of the cities of Folsom and Sacramento).

Local collection typically starts near the property line, after the private sewer lateral located on each property. From there, wastewater flows through larger pipes (collectors, main lines and trunk lines) and a series of pump stations while on its way to the “regional conveyance” system.

Getting Wastewater to the Treatment Plant

The local collection system ultimately connects to a system of large pipes, called interceptors, and large pump stations that convey wastewater directly to the Sacramento Regional Wastewater Treatment Plant in Elk Grove.

Treating and Safely Discharging Wastewater

The **Sacramento Regional Wastewater Treatment Plant** (SRWTP) is where the highly sophisticated process of cleaning wastewater happens. The SRWTP safely and efficiently handles the wastewater treatment needs for nearly 1.3 million residents in the Sacramento region. On an average day, 160 million gallons per day (mgd) of wastewater are treated – enough to cover a football field to a height of 40 stories! And during peak wet weather flows, SRWTP can treat up to 400 mgd!

After treatment, the Plant safely discharges treated wastewater into the Sacramento River south of the Freeport Bridge.



Aerial View of the Sacramento Regional Wastewater Treatment Plant

For more information about your local collection agency, please contact one of the following depending on your location:

- **City of Sacramento Department of Utilities...** 916-808-5454
- **City of Folsom Sewer Division.....** 916-355-8365
- **City of West Sacramento Public Works.....** 916-617-4850
- **County Sanitation District 1.....** 916-875-6730

LOCAL AGENCY AND REGIONAL (SRCSD) RESPONSIBILITIES

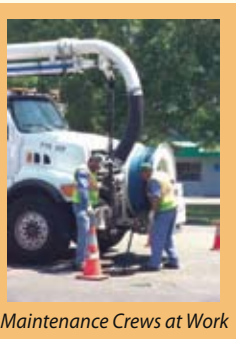
LOCAL COLLECTION

A Homeowner/Business Sewer Lateral
 These sewer pipes are located on private property from the building to the sewer cleanout.

Usually built by developer
 Cost included in home price
 Maintained by home or business owner

B Sewer Clean-out
 If a clean-out exists, it is usually located within two feet of the street sidewalk, on private property or at the parcel line. Sewer clean-outs allow sanitation crews or a private plumber access to clean sewer lines.

Built by developer
 Cost included in home price
 Maintained by local contributing agency or homeowner



Maintenance Crews at Work

C Collectors
 Collector sewer pipes (typically 8 – 12 inches in diameter), maintenance holes and pump stations accommodate wastewater flows less than 1 mgd.

Built by developer and/or local contributing agencies
 Maintained by local contributing agencies

D Trunk Sewers
 Sewer pipes (typically 12 – 36 inches in diameter) and maintenance holes accommodate wastewater flows between 1 mgd and 10 mgd.

Paid for by contributing agency impact fees*
 • Maintained by local contributing agencies



A stockpile of vitrified clay pipe, a standard pipe material used for local sewer projects.

E Local Agency Pump Stations
 Pump stations pump 1 mgd to 10 mgd sewage flows up to an elevation that allows for gravity flow.

Built and maintained by contributing agencies or developers



CSD-1's Fruitridge Pump Station

F SRCSD's Interceptors & Pump Stations
 Sewer pipes, manholes and pump stations accommodate wastewater flows 10 mgd or greater.

Built by SRCSD
 Cost paid by SRCSD impact fees*
 Maintained by SRCSD



An interceptor is a large pipe – from 36 to 144 inches in diameter – that receives wastewater from smaller pipes throughout the region and conveys it to the wastewater treatment plant in Elk Grove.

G Sacramento Regional Wastewater Treatment Plant
 Wastewater is treated safely and returned to the Sacramento River.

Impact* fees fund projects that benefit "new" customers (resulting from growth)
 Monthly rates fund projects and activities that benefit existing users (such as ongoing maintenance and operations)



The plant's on-site laboratory handles wastewater testing and data collection.



Interceptor construction sometimes involves underground tunneling.

REGIONAL CONVEYANCE & TREATMENT

Legend

- Property Owner Maintained
- Local Agency Maintained
- SRCSD Maintained

* Funds paid by a new user for facility costs.

This graphical depiction is representational and does not constitute a detailed "design standard." For detailed design standards contact your local collection agency.



This Guide prepared by
**Sacramento Regional
County Sanitation District (SRCSD)**

For more information about SRCSD, please visit
www.srcsd.com

SRCSD Board of Directors represents:

City of Citrus Heights
City of Elk Grove
City of Folsom
City of Rancho Cordova
City of Sacramento
City of West Sacramento
County of Sacramento
County of Yolo

